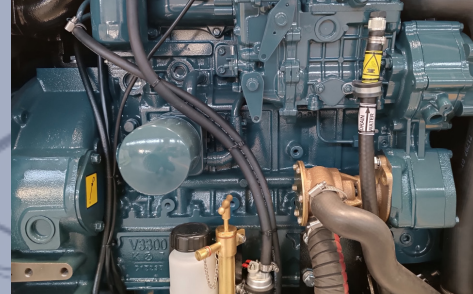


IS 33.05 KT - IS 37.06 KT



CONTROL PANEL



KUBOTA ENGINE



INPUT/OUTPUT FUEL PIPE

the intercooler W/A assures the perfect functioning of the generator independently of the external ambient temperature, therefore the alternator and the engine will work at ideal temperature optimizing the performance and reliability of the gen-set. The generator may be installed in any room on the vessel without the need of ventilation blowers. Extremely compact and quiet, the generator is equipped with a double shock absorbing system to increase comfort: the first one absorbs vibrations from engine-alternator to the frame, the second one absorbs residual micro-vibrations from frame to vessel.

We reserve the right to modify the data, images and drawings in this document without prior notice.

For more detailed information, please contact your local distributor or Mase Generators S.p.A.



COMPACT DESIGN



EASY INSTALLATION



SUPER SILENCED



mase generators spa

Via Tortona, 345 | 47522 - Cesena (FC) | Italy

Tel. +39 0547 354311

commercial@masegenerators.com

www.masegenerators.com

mase
GENERATORS
Believing in change.

CONTROL PANEL

_ CBU EVO IL4 device controls and drives the genset. The large display and control pushbuttons allow an easy use and monitoring:

- Manual start
- Voltage Vac
- Frequency Hz
- Hour meter
- Genset Battery voltage
- Low oil pressure alarm
- Engine preheating
- Engine high temperature alarm
- Alternator battery charger failure alarm
- Protection alarm for frequency and rpm
- Alarm history
- Maintenance warning
- General alarm outlet
- RUN outlet
- Ready outlet
- Programmable AUX outlet

_ Emergency stop button

_ Magneto-thermal protection

ENGINE

_ Easy maintenance access to the feeding and lubrication systems, the sea water pump and the air filter

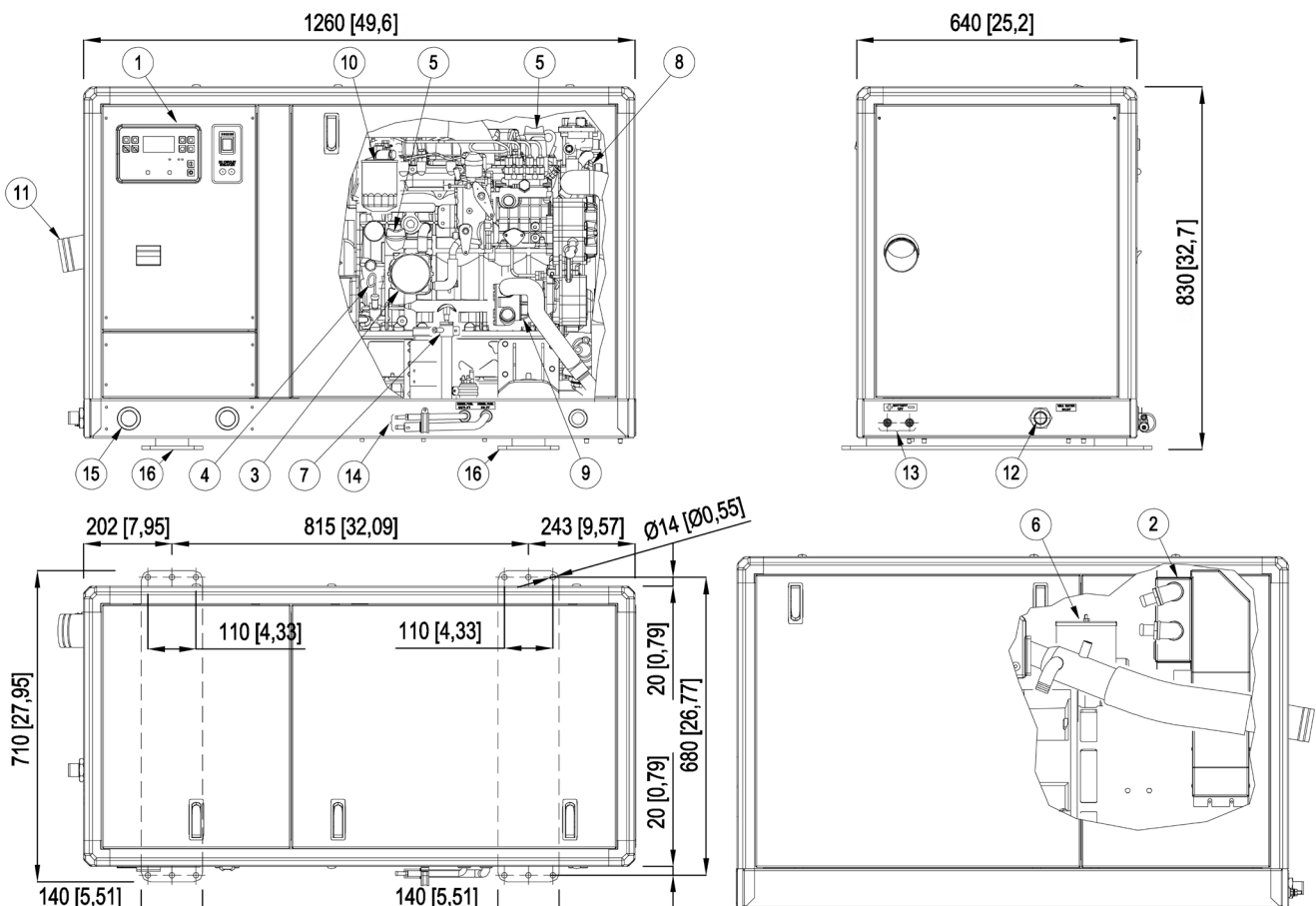
_ Double vibration dumping system

_ Oil drain pump

SOUNDPROOF CABIN

_ Made of extremely light marine aluminum with very high resistance to external agents

Insulated poles kit (for metal hull boats), dry exhaust kit and keel cooling kit are available on request



- | | | | |
|--------------------------|---------------------|--------------------------------|------------------------------------|
| 1. Control panel | 6. Air filter | 11. Exhaust manifold (d.76 mm) | 14. Fuel tank connections (d.8 mm) |
| 2. Air / water exchanger | 7. Oil drump pump | 12. Sea water intake (d.30 mm) | 15. Cables outlet |
| 3. Oil filter cartridge | 8. Fresh water pump | 13. Battery connections | 16. Genset fixing brackets |
| 4. Oil dipstick | 9. Sea water pump | | |
| 5. Engine oil filler | 10. Fuel filter | | |

IS 33.05 KT**IS 37.06 KT****mase**
GENERATORS
*Believing in change.***Three-phase output power 33.5 kVA 50 Hz - 37.5 kVA 60 Hz****50 Hz****60 Hz**  

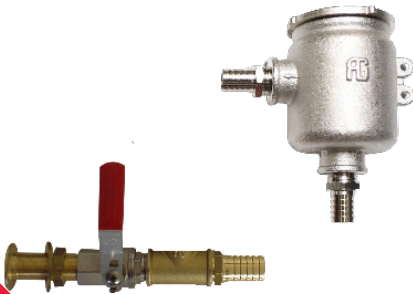
| | | |
|-----------------------|---|-----------------|
| AC alternator - | Synchronous, 4 poles, self-energized, brushless, with AVR | |
| Cooling - | Air / Water (Intercooler W / A) | |
| Voltage - | 400 V | 240 or 480 V |
| Frequency - | 50 Hz | 60 Hz |
| Amps - | 48.4 A | 156.3 or 78.1 A |
| Max power - | 33.5 kVA | 37.5 kVA |
| Continuous power - | 30 kVA | 34 kVA |
| Power Factor - | cos ϕ 0.8 | |
| Insulating class - | H | |
| Voltage stability - | $\pm 2\%$ | |
| Frequency stability - | $\pm 5\%$ | |

The power is referred to a sea water temperature up to 31°, an atmospheric pressure of 100 KPa and a humidity percentage of 30%

| | | |
|--------------------------------------|---|-----------------------------------|
| Model - | KUBOTA V3300 | |
| Type - | Diesel 4 stroke | |
| Cylinders - | nr 4 | |
| Cylinder block material - | Cast Iron | |
| Bore - | 98 mm - 3.86 in | |
| Stroke - | 110 mm - 4.33 in | |
| Displacement - | 3318 cc - 202.47 CID | |
| Power - | 38.8 hp - 28.54 kWm (at 1500 RPM) | 45.1 hp - 33.17 kWm (at 1800 RPM) |
| RPM - | 1500 | 1800 |
| Compression ratio - | 22.6:1 | |
| Combustion system - | Indirect Injection | |
| Engine head material - | Cast Iron | |
| Speed governor - | Mechanical | |
| Lubrication system - | Forced | |
| Oil sump capacity with filter - | 6.6 l - 1.86 gl | |
| Engine stop system - | Electromagnet | |
| Fuel pump - | Electric | |
| Max. fuel pump head - | 700 mm - 27.5 in | |
| Fuel consumption - | 12.1 l/h - 3.41 gl/h | |
| Starting battery - | 100 Ah - 12 V | |
| Battery charger - | 40 Ah - 12 V | |
| Starter motor - | 2.5 kW - 12 V | |
| Max. inclination - | 25° | |
| Water pump flow - | 35 l/min - 9.24 gl/min | 40 l/min - 10.6 gl/min |
| Sea water inlet pipe \emptyset - | 30 mm - 1" 3/16 | |
| Exhaust pipe \emptyset - | 76 mm - 3" | |
| Input/Output fuel pipe \emptyset - | 8 mm - 5/16" | |
| Dimensions (L x W x H) - | 1260 x 640 x 830 mm - 49.6 x 25.2 x 32.7 in (with soundproof box) | |
| Weight - | 630 Kg - 1389 lb (with soundproof box) | |
| Noise Level - | 52 dBA a 7 mt (23 ft) | 54 dBA a 7 mt (23 ft) |

IS 33.05 KT**IS 37.06 KT****mase**
GENERATORS
*Believing in change.***€** Three-phase output power 33.5 kVA 50 Hz - 37.5 kVA 60 Hz**Accessory****Code****ACCESSORIES
ON REQUEST**

| | |
|---|--------|
| • Filtering kit: sea water inlet, sea water strainer, taps, fittings D.32 - ref.4 | 030906 |
| • Siphon break D.32 - ref.3 | 030907 |
| • Vetus muffler LP75 WLOCK LP75 | 70856 |
| • Vetus silencer MP75 | 71121 |
| • Centek muffler 3" - ref.5 | 71282 |
| • Centek 3" water/gas exhaust separator - ref.6 | 71283 |
| • Remote START/STOP panel with 20m cable for Comap IL4 - ref.1 | 037561 |
| • Comap IL4 remote start panel with 20-meter cable - ref.2 | 039607 |
| • Oil water senders kit IS Kubota | 039678 |
| • Cruise KIT 2024 | 913808 |

**.1****.2****.3****.4****.5****.6**