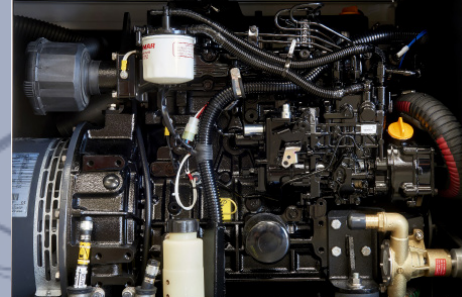


mariner 1200S - 1460S



CONTROL PANEL



YANMAR ENGINE



INPUT/OUTPUT FUEL PIPE

the engine is cooled by a coolant loop in a closed circuit. The system consists of a heat exchanger, inside which the heat exchange between coolant and sea water takes place. Two separate pumps provide for the circulation of coolant and seawater. Air flows ensure effective cooling of the alternator. The excellent accessibility makes maintenance operations easier, even with the generator installed in confined environments.



COMPACT DESIGN



EASY INSTALLATION



SUPER SILENCED

We reserve the right to modify the data, images and drawings in this document without prior notice.

For more detailed information, please contact your local distributor or Mase Generators S.p.A.



mase generators spa

Via Tortona, 345 | 47522 - Cesena (FC) | Italy

Tel. +39 0547 354311

commercial@masegenerators.com

www.masegenerators.com

mase
GENERATORS
Believing in change.

CONTROL PANEL

_ CBU EVO IL4 device controls and drives the genset. The large display and control pushbuttons allow easy use and monitoring:

- Manual start
- Voltage Vac
- Frequency Hz
- Hour meter
- Genset battery voltage
- Oil low pressure alarm
- Engine preheating
- Engine high temperature alarm
- Alternator battery charger failure alarm
- Protection alarm for frequency and rpm
- Alarm history
- Maintenance warnings
- General alarm outlet
- RUN outlet
- Ready outlet
- Programmable AUX outlet

_ Emergency stop button

_ Magneto-thermal protection

ENGINE

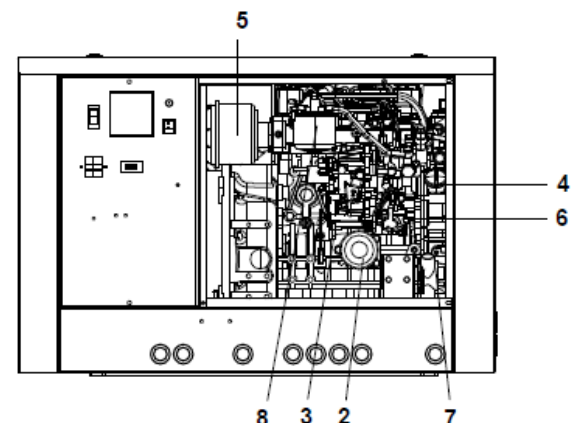
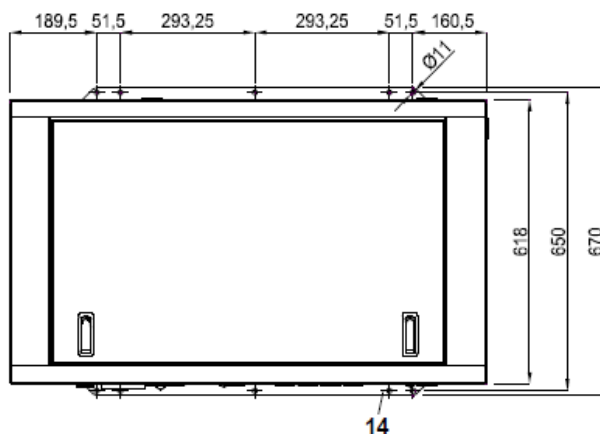
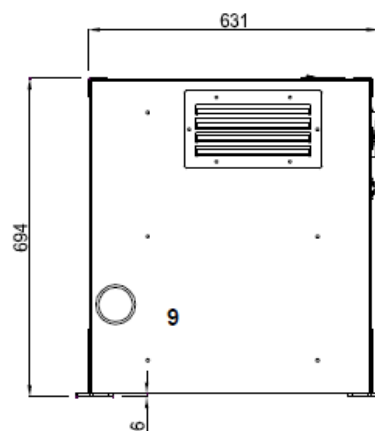
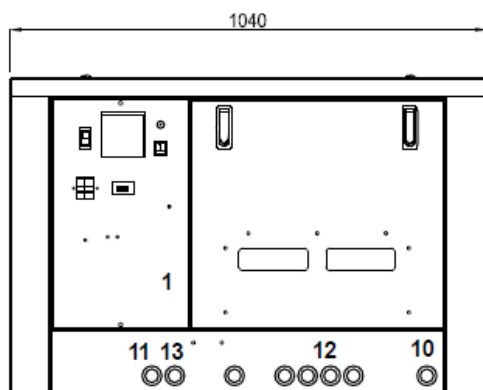
_ Easy maintenance access to the feeding and lubrication systems, the sea water pump and the air filter

_ Double vibration dumping system

_ Oil drain pump

SOUNDPROOF CABIN

_ Made of extremely light marine aluminum with very high resistance to external agents



- | | | | |
|--------------------------------|---|----------------------------------|---------------------|
| 1. Control panel | 6. Closed circuit water pump | 10. Seawater inlet (ø 16mm) | 14. Fixing stirrups |
| 2. Engine oil filter cartridge | 7. Seawater pump | 11. Battery connection | |
| 3. Oil dipstick | 8. Fuel filter | 12. Fuel tank connection (ø 8mm) | |
| 4. Engine oil cap | 9. Seawater exhaust connection (ø 50mm) | 13. Electric cables outlet | |

	50 Hz	60 Hz
AC alternator -	Synchronous, 4 poles, with AVR	
Cooling -	Air	
Voltage -	115 - 230 V	120 - 240 V
Frequency -	50 Hz	60 Hz
Amps -	97.4 - 48.7 A	112.5 - 56.3 A
Max power -	11.2 kW	13.5 kW
Continuous power -	10.2 kW	12.3 kW
Power Factor -	cos ϕ 1	
Insulating class -	H	
Voltage stability -	$\pm 2\%$	
Frequency stability -	$\pm 5\%$	

The power is referred to an atmospheric pressure of 100 kPa, a humidity percentage of 30% and an ambient temperature of 25°C.

Model -	Yanmar 3TNV88	
Type -	Diesel	
Cylinders -	nr 3	
Cylinder block material -	Cast iron	
Bore -	88 mm - 3.47 in	
Stroke -	90 mm - 3.55 in	
Displacement -	1642 cc - 100.20 CID	
Power -	18.4 hp - 13.53 kWm (at 1500 RPM)	22.2 hp - 16.33 kWm (at 1800 RPM)
RPM -	1500	1800
Compression ratio -	19.1:1	
Combustion system -	Direct injection	
Engine head material -	Cast iron	
Speed governor -	Mechanical	
Lubrication system -	Forced	
Oil sump capacity with filter -	5.80 l - 1.63 gal	6.70 l - 1.89 gal
Engine stop system -	Electromagnet	
Fuel pump -	Electric	
Max. fuel pump head -	700 mm - 27.5 in	
Fuel consumption -	4 l/h - 1.06 gal/h	5 l/h - 1.32 gal/h
Air intake -	904 l/min - 32 cfm	1300 l/min - 46 cfm
Starting battery -	80 Ah - 12 V	
Battery charger -	40 Ah - 12 V	
Starter motor -	1.2 Ah - 12 V	
Max. inclination -	25°	
Water pump flow -	25 l/min - 6.6 gal/min	28 l/min - 7.39 gal/min
Sea water inlet pipe \varnothing -	20 mm - 3/4"	
Exhaust pipe \varnothing -	50 mm - 2"	
Input/Output fuel pipe \varnothing -	8 mm - 5/16"	
Dimensions (L x W x H) -	1040 x 631 x 694 mm - 40.9 x 24.8 x 27.3 in (with soundproof box)	
Weight -	344 kg - 759 lb (with soundproof box)	
Noise Level -	52 dBA at 7 mt (23 ft)	54 dBA at 7 mt (23 ft)

Accessory

Code

ACCESSORIES ON REQUEST

• Filtering kit: sea inlet, water filter, valves, fittings D.20 - ref.4	016422
• Exhaust kit: muffler, silencer, exhaust nozzle D.50 MASE	04658
• Exhaust kit and super-silenced separator D.50 MASE	010078
• Siphon break kit D.16 - ref.3	04290
• Muffler D.50 MASE	70795
• Silencer D.50 MASE	71809
• Water/gas separator MASE D.50	04488
• Muffler Vetus LP50	71148
• Silencer Vetus MP50	71751
• Silencer c.71751 with soundproofing sponge	039866
• Separator Vetus LGS5038	71717
• Muffler Centek 2" - ref.5	71155
• Water/gas separator 2" Centek - ref.6	71156
• Remote START/STOP panel with 20m cable for Comap IL4 - ref.1	037561
• Comap IL4 remote start panel with 20m cable - ref.2	039607
• Cruise Kit	913903



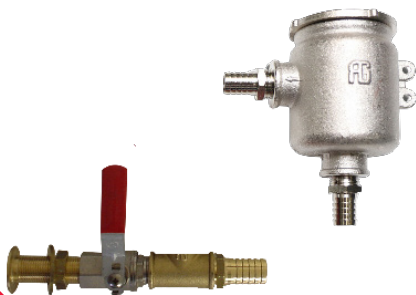
.1



.2



.3



.4



.5



.6